



●導電性高分子固体コンデンサ



●CONDUCTIVE POLYMER SOLID CAPACITORS

PRG

JIS C 5101 CE-04

TYPE PRG

JIS C 5101 CE-04

■特徴

- ・105°C、20000時間保証品
- ・低ESR ラジアルリード形固体コンデンサ

■FEATURES

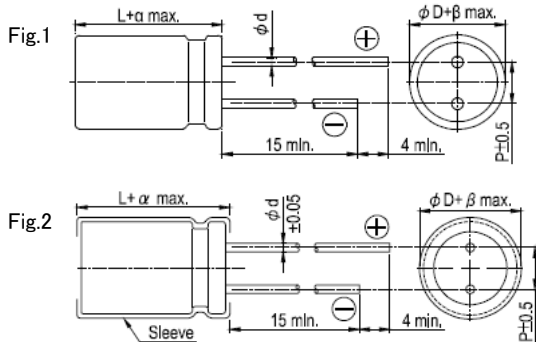
- ・It's guaranteed for 105°C 20000 hours.
- ・Low ESR, solid capacitors of radial lead type

■性能/PERFORMANCE SPECIFICATIONS

カテゴリー温度範囲	CATEGORY TEMPERATURE RANGE	-55°C ~ +105°C
標準静電容量許容差	STANDARD CAPACITANCE TOLERANCE	±20% (120Hz, 20°C)
漏れ電流 (最大値)	LEAKAGE CURRENT (MAX.VALUE)	Rated voltage applied, after 2 minutes at 20°C. See Standard Ratings
損失角の正接: tan δ (最大値)	DISSIPATION FACTOR: tan δ (MAX.VALUE)	See Standard Ratings (120Hz, 20°C)
ESR	ESR	See Standard Ratings (100kHz~300kHz, 20°C)
耐久性 105°C, 20,000時間 20~35V: 15,000時間 定格電圧印加	ENDURANCE APPLICATION OF RATED VOLTAGE, AT 105°C FOR 20,000 hours. 20~35V: 15,000 hours	Capacitance Change : Within ±20% of the initial value Dissipation Factor (tan δ) Less than 150% of specified value ESR : Less than 150% of specified value Leakage Current : Less than the initial specified value
耐湿負荷特性 (定常) 60°C, 90~95%, 1000時間	Moisture resistance (STEADY STATE) 60°C, 90~95%, 1000 hours	Capacitance Change : Within ±20% of the initial value Dissipation Factor (tan δ) Less than 150% of specified value ESR : Less than 150% of specified value Leakage Current : Less than the initial specified value *Leakage current should be tested after treatment*1.

*1: For any doubt measured values, measure the leakage current again after the following voltage treatment.
Voltage treatment: DC rated voltage is applied to the capacitors for 2 hours at 105°C.

■寸法図/DIAGRAM OF DIMENSIONS



Size Code	φD	L	P	φd	α	β	Fig. No.
E55	6.3	5.5	2.5	0.45	0.5	0.5	1
E08	6.3	8	2.5	0.6	1.0	0.5	1
F08	8	8	3.5	0.6	1.0	0.5	1
F11	8	11.5	3.5	0.6	1.0	0.5	1
F16	8	16	3.5	0.6	1.5	0.5	2
F20	8	20	3.5	0.6	2.0	0.5	2
G12	10	12	5.0	0.6	1.0	0.5	1
G16	10	16	5.0	0.6	1.5	0.5	2
G20	10	20	5.0	0.6	2.0	0.5	2

■標準品一覧表 / STANDARD PRODUCT TABLE

W.V. (V)	Cap. (μF)	Size (φD × L) (mm)	tan δ (120Hz, 20°C)	Leakage Current (μA)	ESR [100~300kHz, 20°C] (mΩ)	Ripple Current [100kHz, 105°C] (mA)
16 (1C)	150	6.3 × 5.5	0.12	480	20	3,200
	270	6.3 × 8	0.12	864	10	5,080
	330	6.3 × 8	0.12	1056	10	5,080
	470	8 × 8	0.12	1504	8	5,400
	560	8 × 11.5	0.12	1792	8	6,100
	680	8 × 11.5	0.12	2176	8	6,100
	820	8 × 16	0.12	2624	12	7,000
	820	10 × 12	0.12	2624	12	5,400
	1,000	8 × 16	0.12	3200	8	7,000
	1,000	8 × 20	0.12	3200	8	7,500
	1,000	10 × 12	0.12	3200	12	5,400
	1,200	8 × 20	0.12	3840	8	7,500
	1,200	10 × 12	0.12	3840	12	5,400
	1,500	8 × 20	0.12	4800	8	7,500
	1,500	10 × 16	0.12	4800	8	7,700
	1,800	10 × 16	0.12	5760	8	7,700
1,800	10 × 20	0.12	5760	8	8,100	
2,200	10 × 20	0.12	7040	8	8,100	
2,700	10 × 20	0.12	8640	8	8,100	
20 (1D)	120	6.3 × 5.5	0.12	480	20	3,200
	180	6.3 × 8	0.12	720	18	3,460
	330	8 × 8	0.12	1320	17	3,880
	390	8 × 11.5	0.12	1560	14	4,970
	680	10 × 12	0.12	2720	12	5,400

W.V. (V)	Cap. (μF)	Size (φD × L) (mm)	tan δ (120Hz, 20°C)	Leakage Current (μA)	ESR [100~300kHz, 20°C] (mΩ)	Ripple Current [100kHz, 105°C] (mA)
25 (1E)	56	6.3 × 5.5	0.12	280	30	2,600
	82	6.3 × 8	0.12	410	28	2,780
	100	6.3 × 8	0.12	500	28	2,780
	120	6.3 × 8	0.12	600	28	2,780
	180	8 × 8	0.12	900	18	3,770
	180	8 × 11.5	0.12	900	16	4,650
	220	8 × 11.5	0.12	1100	16	4,650
	330	10 × 12	0.12	1650	14	5,000
	330	10 × 12	0.12	1950	14	5,000
35 (1V)	68	8 × 11.5	0.12	476	18	4,380
	120	10 × 12	0.12	840	16	4,670

■リップル電流周波数補正係数 / Frequency Multiplier for Ripple Current

Frequency: f (Hz)	120 ≤ f < 1k	1k ≤ f < 10k	10k ≤ f < 100k	100k ≤ f < 500k
Multiplier	0.05	0.30	0.70	1.00

■品番ご指定法/HOW TO SPECIFY NUMBER

1C PRG 681 M L □ □ □

